

Selection  
guideConstant  
temperature  
Incubator/shaker  
CO<sub>2</sub> MonitorCO<sub>2</sub> incubator  
shaker

Shaker

Mixer  
Rotator  
StirrerBead beater  
homogenizer  
Ultrasonic  
homogenizerAluminum  
block bath  
Minimize bathWater bath  
Shaking water bath  
Immersion coolerHydridation oven  
Constant temperature  
chamberCentrifugal  
concentrator  
Cold trap

Freeze dryer

Electrophoresis  
and  
Blotting apparatusConstant  
temperature  
water circulating  
system [Chiller]

Appendix

## Beads crusher $\mu$ T-01/01N

**Strong crushing and High stability by High speed pendular swinging.**  
**A model equipped with Shaking speed stepless setting and Memory function is newly lined up.**

Microtubes that are used with Beads crushers --> P.088



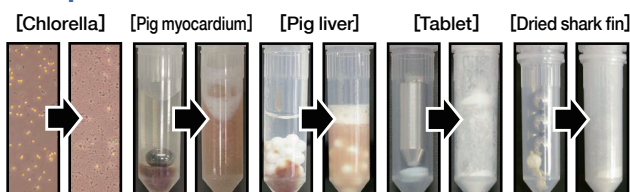
### Features

- Outstanding stability even high speed shaking at 4600r/min
- For one simple 2mL Micro tube (Throughput 0.2g)
- Stainless steel beads and Metal crusher can be used

### Applications

- Crushing of Microbes (bacteria, chlorella, yeast) and Insects
- Crushing of Cells, Tissues and Organs of animals and plants
- Crushing of Tablets and Resin pellets (with low viscosity)

**Examples** These are no more than a few examples.



### Beads crushing method

This method is adapted to extract nucleic acids, proteins and residual substances from biological/environmental samples. Nucleic acids are often fragmented and basically served for PCR templates and not suitable for genome extraction. Used for human DNA identification, drug toxicological examination from human hair, seed quality examination, examination of BSE and Johne's disease, investigation of soil microflora etc. and also sample preparation for spectroscopic analysis for resin.

Model	$\mu$ T-01	$\mu$ T-01N
Crushing method	Crushing beads with pendular swing method.	
Shaking speed (*1)	2500 to 4600 r/min (6-step setting)	2000 to 4600 r/min (Stepless setting: per 100r/min)
Capacity	1pc x 1.5/2.0 mL Screw cap microtube (*2)	
Applicable beads	Nonmetal beads, Stainless steel beads, Metal crusher (*1) (*3)	
Ambient temperature	5°C to 35°C (No condensation)	
Speed memory	-	1 x Setting
Timer	6-step setting (5, 10, 15, 30, 45, 60 seconds)(*1)	-
Safety devices / functions	Braking when cover open during operation. Motor stopping when cover open, Motor overcurrent protection,	
Dimensions / Weight	175(W) x 280(D) x 160(H)mm, Approx. 5kg	
Power supply	AC100 to 240V/0.5A	

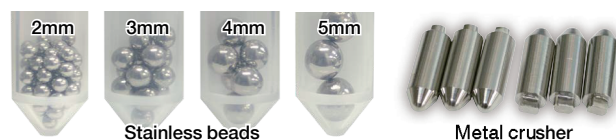
(\*1) Set below 4000 r/min and 15 seconds when using Metal crusher.

(\*2) Outer diameter below 11mm of the body of Microtubes can be used. Refer Recommended Microtubes on 83page.

(\*3) Stainless steel beads and Metal crusher are available as an option. Marketed Glass and Zirconia beads can be used.

(\*4) An actual shaking speed might be slower than that of specs due to load.

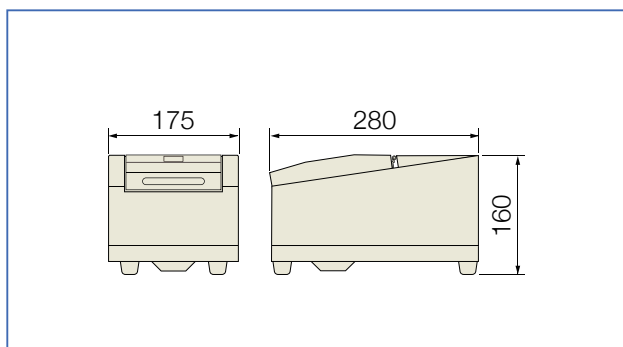
### Optional parts



Product Name/Model	Remarks
<b>Stainless beads <math>\phi</math>2mm</b>	70g (approx. 2100pcs)
<b>Stainless beads <math>\phi</math>3mm</b>	150g (approx. 1300pcs)
<b>Stainless beads <math>\phi</math>4mm</b>	150g (approx. 560pcs)
<b>Stainless beads <math>\phi</math>5mm</b>	150g (approx. 280pcs)
<b>Mixed Stainless beads</b>	$\phi$ 2pcs/20g, 3pcs/40g, 4pcs/40g, 5pcs/50g
<b>Metal crusher</b>	2mL Microtube (Conical bottom) 6pcs
<b>Zirconia crusher</b>	2mL Microtube (Conical bottom) 3pcs

\*Stainless beads and Metal crusher are made of stainless steel

### Dimensions ( $\mu$ T-01 and $\mu$ T-01N common)



We contribute to the development of research and industry.

**TATEC** [ 2019-2020 General Catalog ]

● Protuberances not included in Dimensions. ● Vessels of photo not included.