

Prescyto MG-71C/71M

Multi-gas incubator equipped with a new function "Low oxygen booster" makes Hypoxia conditions back quickly after door open and close (4-times faster than the conventional one. *Pat. pend).

Shaker for High humidity "CS-LR" that can be inside Chamber --> P.052 Optional accessories and Related products --> P.042-044



MG-71M

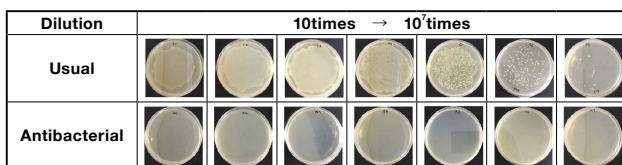
Features

- Low oxygen booster makes Hypoxia conditions back quickly (71M)
- Oxygen sensor simple checking function (71M)
- Equipped with Connection holes to Chamber
- Stackable to 2 levels

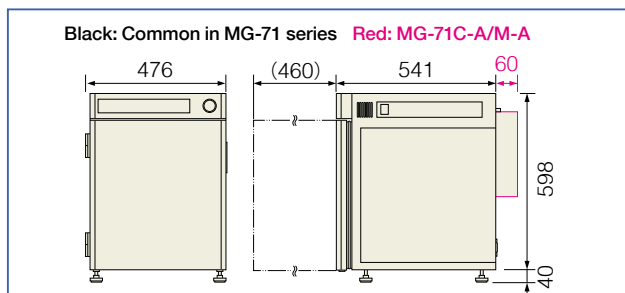
Applications

- Hypoxic culture of Stem cells and Tumor cells (71M)
- Cultivation of Obligatory anaerobe (71M)
- Cultivation of Adherent cells of such as mammals

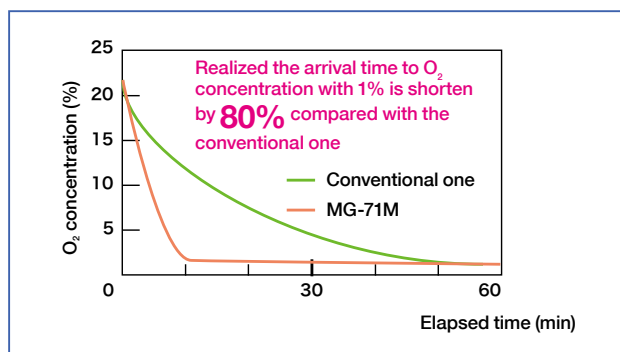
Antibacterial test results on the shelf



External dimensions



The arrival time to O₂ concentration with 1% by Low oxygen booster



Multi-gas incubator equipped with a new function "Low oxygen booster (MG-71M)" makes Hypoxia conditions back quickly after increasing oxygen concentration by door open and close. Realized the arrival time to O₂ concentration with 1% is shorten by 80% compared with the conventional one.

Product name	CO ₂ incubator	Multi-gas incubator
Model	MG-71C	MG-71M
Temperature range/accuracy	5°C above RT to 50°C, ±0.2°C (*1)	
Heating method	Air Jacket type (6 Heaters)	
Gas control range	CO ₂ : Atmospheric concentration to 20% (Set in 0.1%) (*2)	CO ₂ : Atmospheric concentration to 20% (Set in 0.1%) (*2) O ₂ : 1% to 20% (Set in 0.1%) (*3)
Ambient temp. range	15°C to 35°C	
Humidification method	Natural evaporation by the Humidity pan	
Inner Dimensions/ Chamber volume	Chamber: W 354 x D 425 x H 418mm, Approx. 53L	
Example of Capacity	Per shelf: 49 x Petri Dish φ35m, 6 x Well plate, 14 x 25cm ² of TC flask	
Other functions	2 x Connection holes (inner dia. φ30mm), Outlet for external supply (Max. 3A), RS-232C terminal, Low oxygen booster (71M), Oxygen sensor simple checking function (71M)	
Gas connection port	Barbed nozzle φ9mm (Replaceable: 1/4Rc)	
Dimensions/Weight	W 476 x D 578 x H 638mm, Approx. 51kg	
Standard accessories	3 x Shelf (Antibacterial treatment (*4)), 6 x Shelf support, 1 x Humidity pan, 1 x Gas supply tube (5m), 2 x Hose band	3 x Shelf (Antibacterial treatment (*4)), 6 x Shelf support, 1 x Humidity pan, 1 x Gas supply tube (10m), 4 x Hose band
Power supply	AC100V/3.5A (Max. 6.5A when using Outlet for external supply)	

(*1)The value at the ambient temperature 25°C and operation temperature 37°C/CO₂ 5%. (*2)Measured by Infrared type CO₂ sensor. (*3)Measured by Zirconia type oxygen sensor (*4)Up to Six shelves can be stored. •"Multi-gas" is a specification that controls CO₂ and O₂ Concentration by connecting CO₂ Gas and N₂ Gas or O₂ Gas.